



Walter Schmidt
State Geologist and Chief

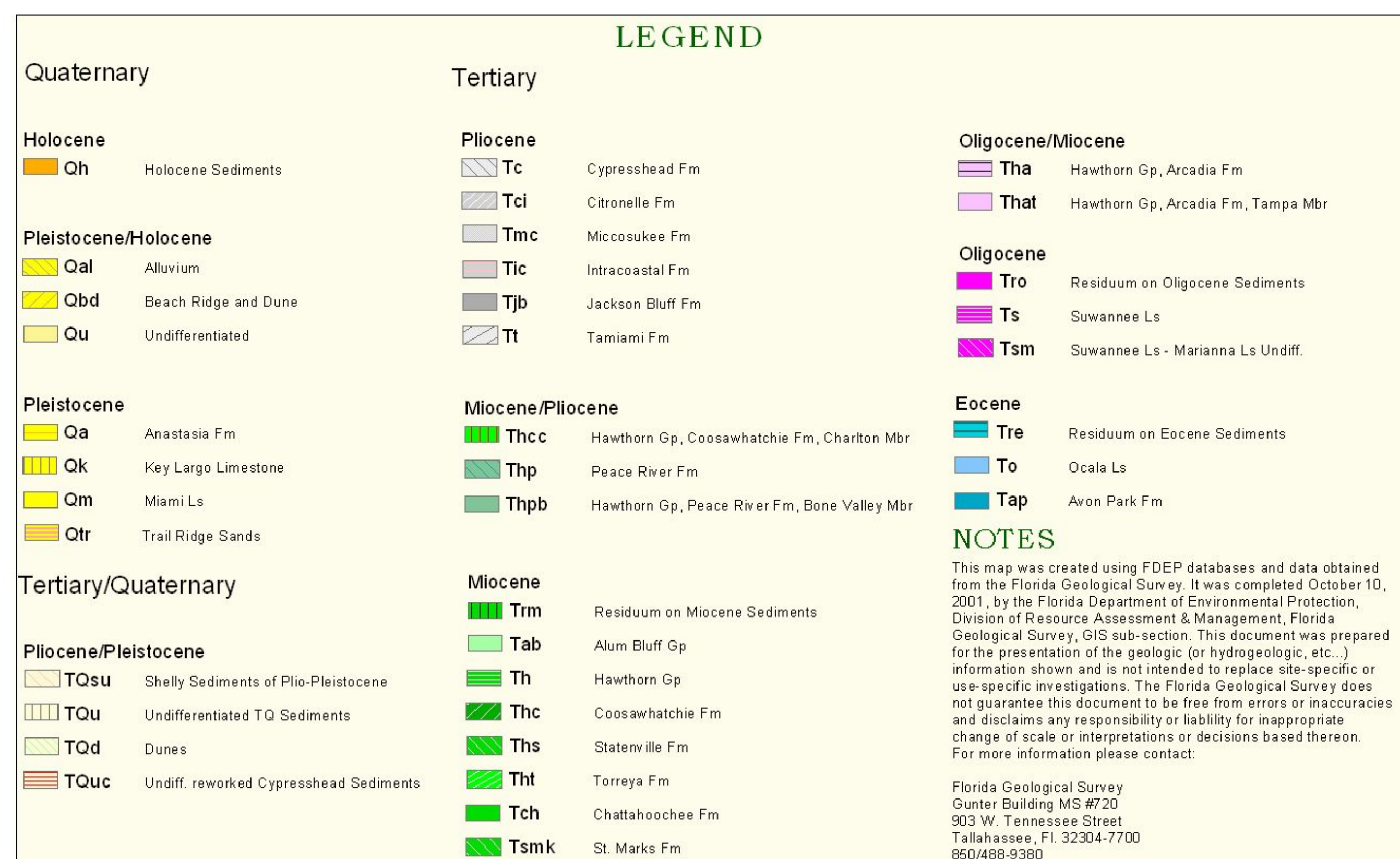


David B. Struhs, Secretary

Geologic Map of the State of Florida

by
Thomas M. Scott, P.G.#99, Kenneth M. Campbell, Frank R. Rupert,
Jonathan D. Arthur, Richard C. Green, Guy H. Means, Thomas M. Missimer,
Jacqueline M. Lloyd, J. William Yon and Joel G. Duncan
2001

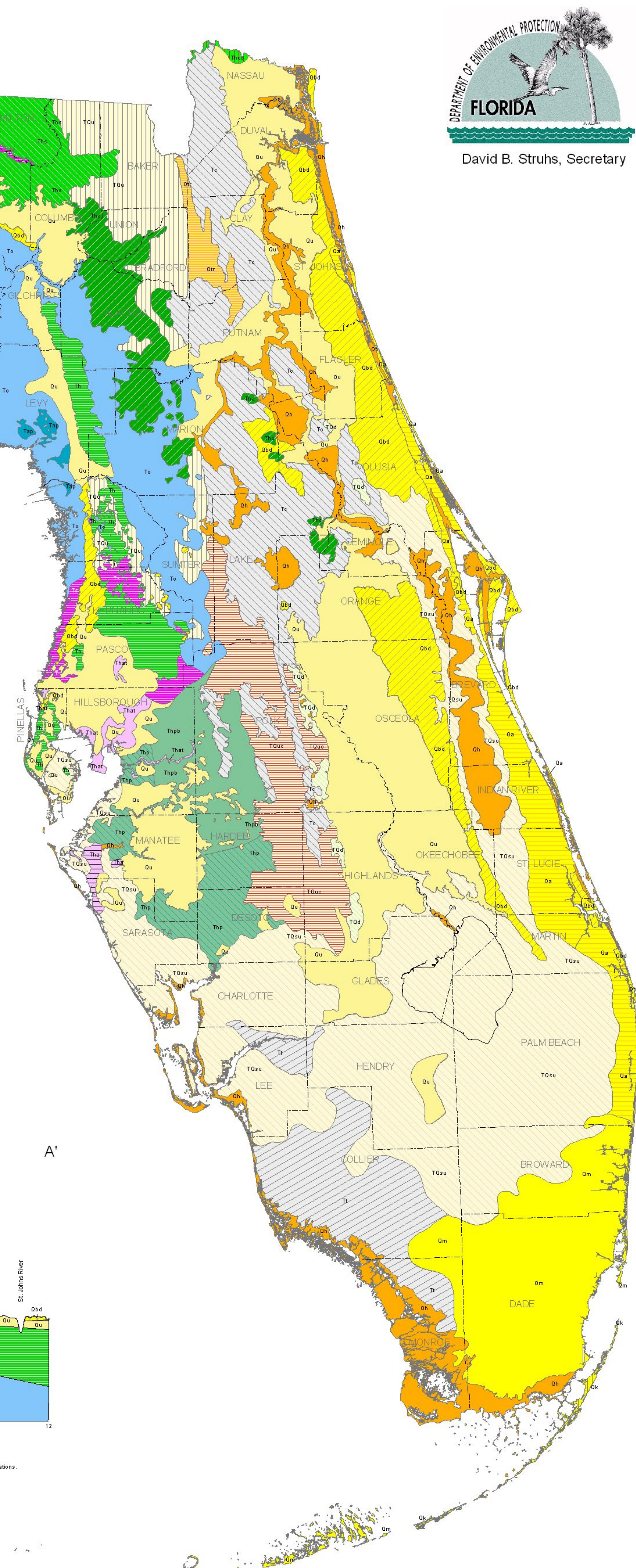
(Revised - April 15, 2006 by David Anderson)



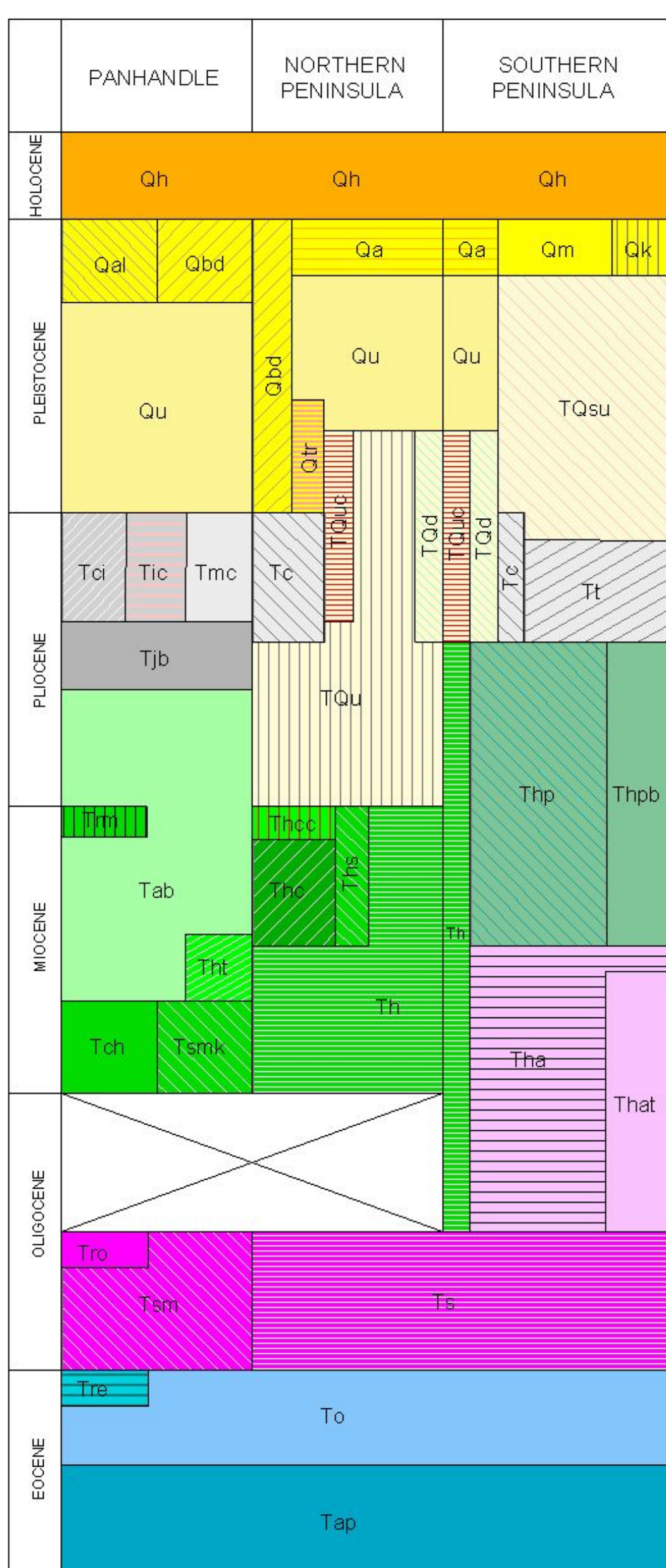
NOTES

This map was created using FDEP databases and data obtained from the Florida Geological Survey. It was completed October 10, 2001, by the Florida Department of Environmental Protection, Division of Resource Assessment & Management, Florida Geological Survey, GIS sub-section. This document was prepared for the presentation of the geologic (or hydrogeologic, etc.) information shown and is not intended to replace site-specific or use-specific investigations. The Florida Geological Survey does not guarantee this document to be free from errors or inaccuracies and disclaims any responsibility or liability for inappropriate changes of scale or interpretations or decisions based thereon. For more information please contact:

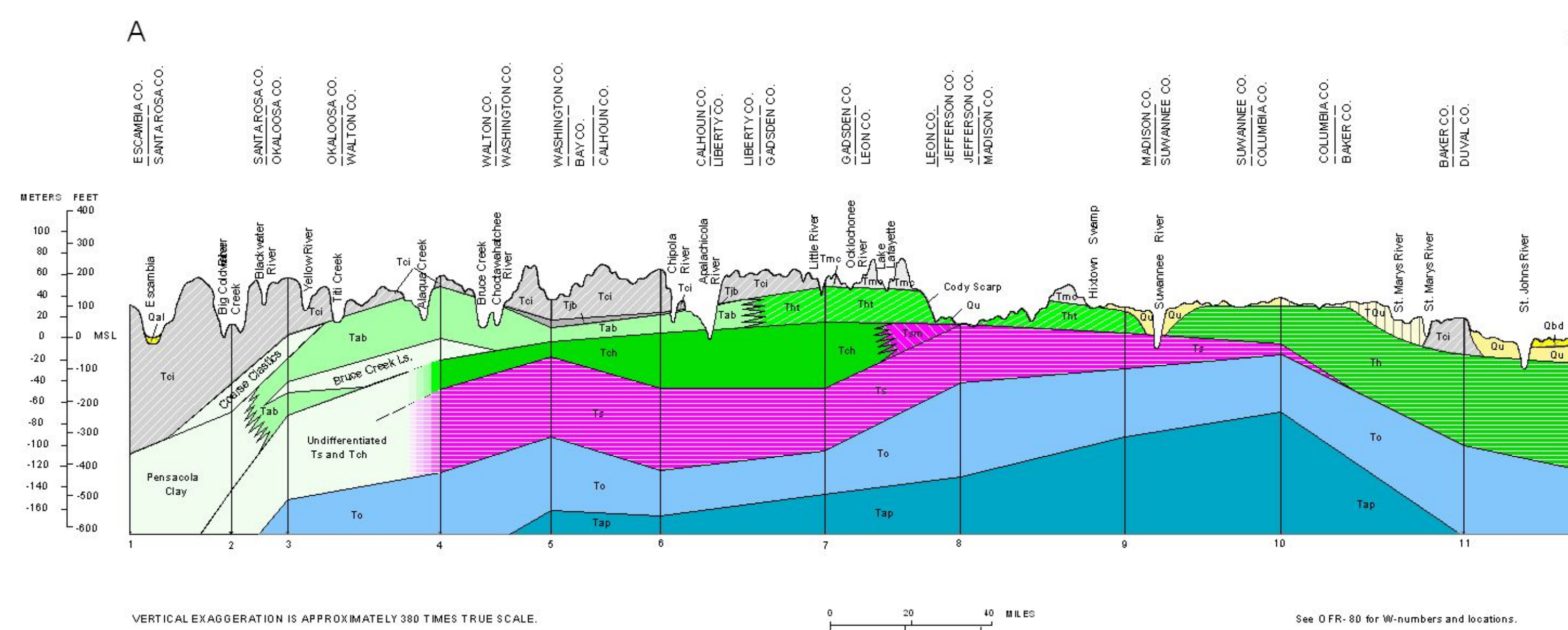
Florida Geological Survey
Center Building MS W720
903 W. Tennessee Street
Tallahassee, FL 32304-7700
850/488-9380



LITHOSTRATIGRAPHIC UNITS



CROSS SECTION A - A'



CROSS SECTION B - B'

